

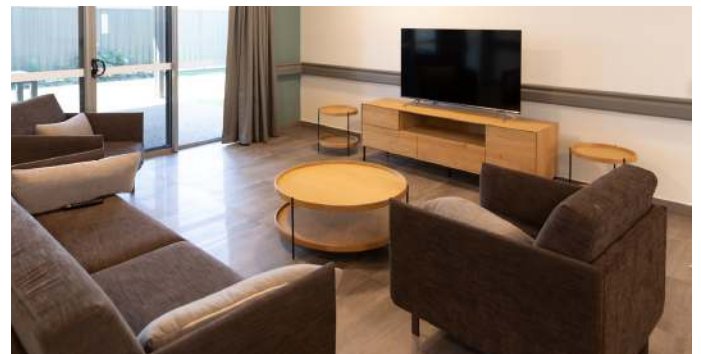
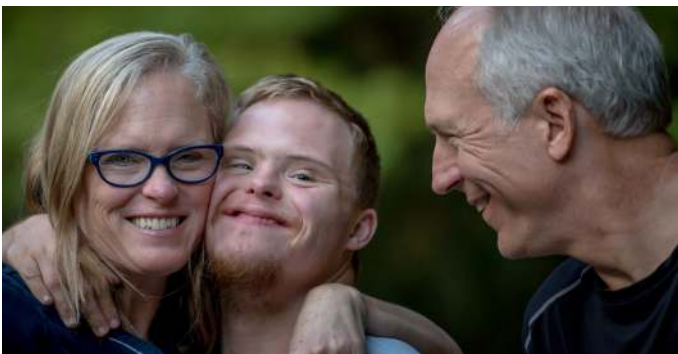


carpentaria



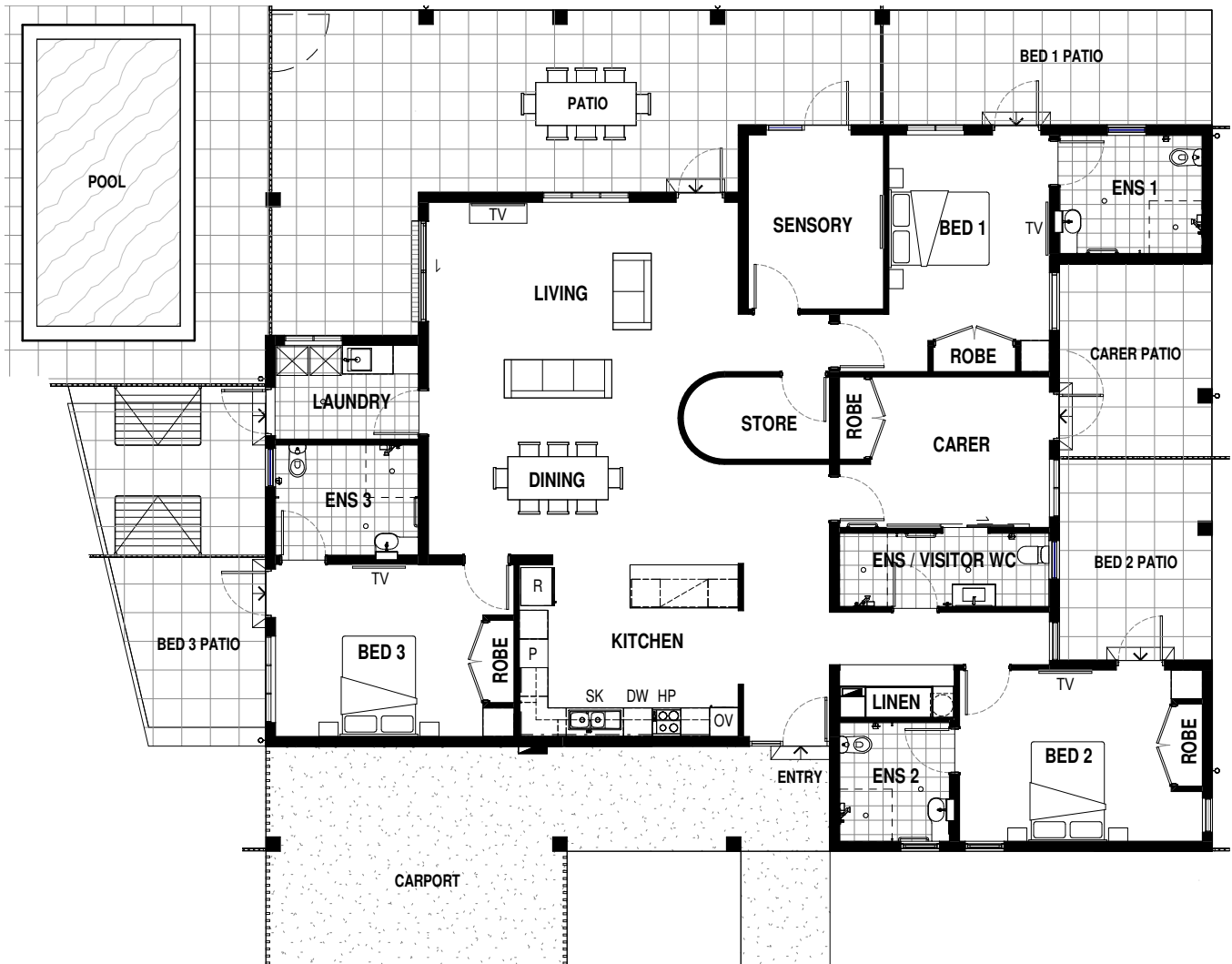
Specialist Disability Accommodation

14 Strele Crescent **WANGURI**



Designed to provide privacy and individual living for residents, while still being part of a shared home environment, this design focuses on safety features and functionality to create a home where residents can thrive.

- Designed to meet the Robust SDA category
- Large 910m² block opening onto Strele Park, in the sought after suburb of Wanguri
- Close to Casuarina Shopping Centre and Casuarina Village, Casuarina pool, medical facilities, Royal Darwin Hospital and beaches



This 350m² architecturally designed home will be constructed to the highest standards and features:

- 3 generous bedrooms for SDA residents with built-in robes, large ensuites and individual private verandas and landscaped yard spaces, designed to facilitate privacy and support individual living
- Large kitchen with island bench, ideal for supported cooking activities
- A centrally located sensory room
- Open plan living and dining areas that open onto the large shared outdoor patio
- Generous pool, with hoist and accessibility features
- Airconditioning throughout
- Beautifully landscaped gardens, including a private garden for each resident as well as shared garden spaces
- Ample off-street parking, and a combination of fencing that offers security to residents as well as privacy from neighbours
- Designed to take advantage of the adjacent leafy park