



carpentaria



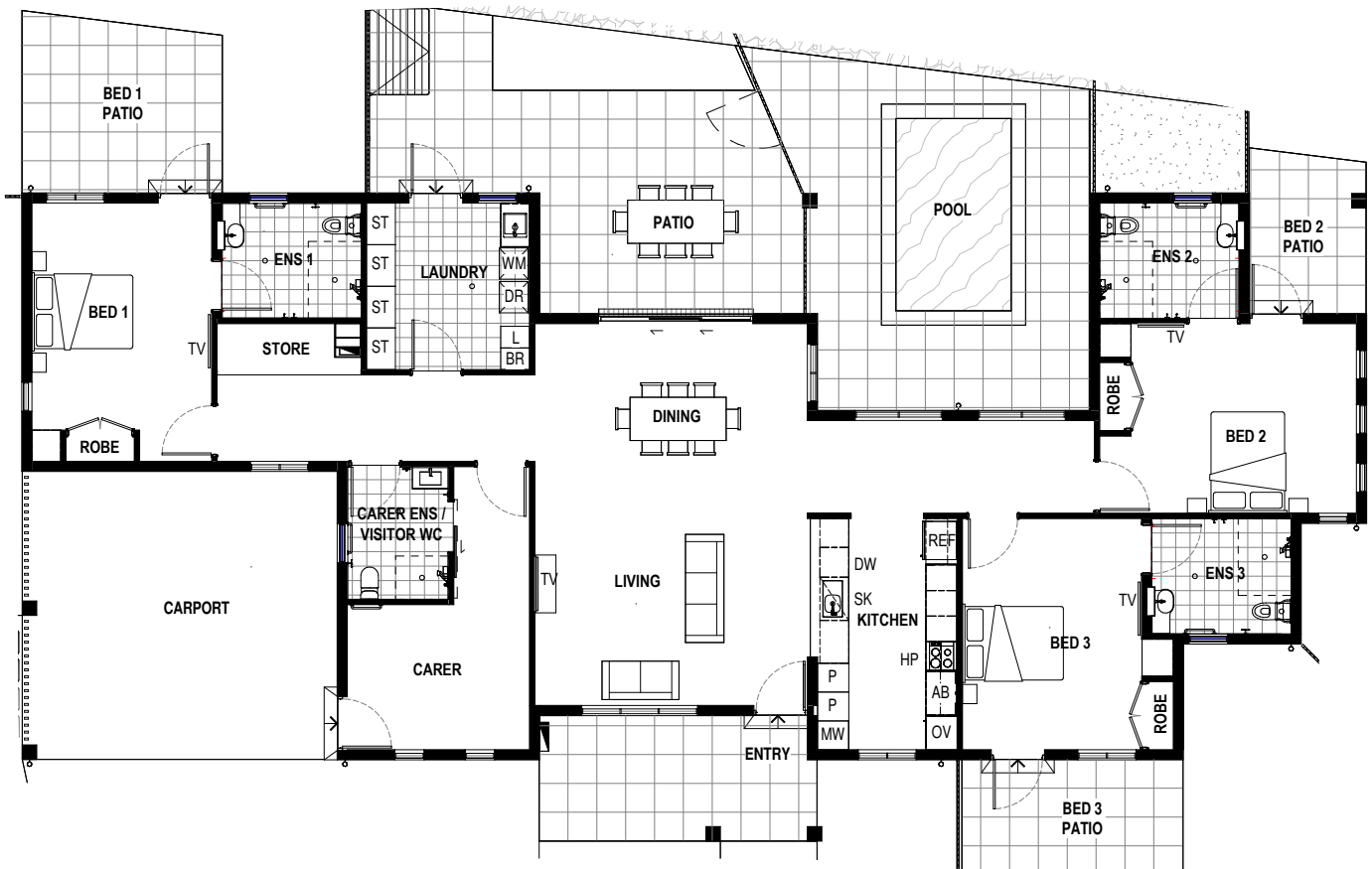
Specialist Disability Accommodation

23 Macassar Street **WAGAMAN**



This home has been designed to support people with a significant physical disability, with functionality to create a home environment where residents can thrive and grow independence.

- Designed to meet the Fully Accessible SDA category
- 693m2 corner block in the centrally located suburb of Wagaman
- Close to Casuarina Shopping Centre and Casuarina Village, Casuarina pool, medical facilities, Royal Darwin Hospital and beaches



This 280m² architecturally designed home will be constructed to the highest standards and features:

- 3 oversized bedrooms for SDA residents with built-in robes, large ensuites and individual private verandas and landscaped yard spaces, designed to facilitate privacy and support individual living
- Galley style kitchen with accessible options to cater for individual requirements
- Open plan living and dining areas that open onto the large shared outdoor patio
- Generous pool, with a hoist and accessibility features
- Airconditioned throughout
- Beautifully landscaped gardens, including a private garden for each resident as well as shared garden spaces
- Ample off-street parking, and a combination of fencing that offers security to residents as well as privacy from neighbours